

An aerial, isometric-style illustration of a campus. The image shows a network of roads and parking lots. Numerous buildings of various sizes and shapes are scattered throughout the campus. Some buildings have flat roofs, while others have gabled roofs. The colors of the buildings are muted, including shades of grey, white, and light blue. The overall layout suggests a well-organized institutional or educational environment.

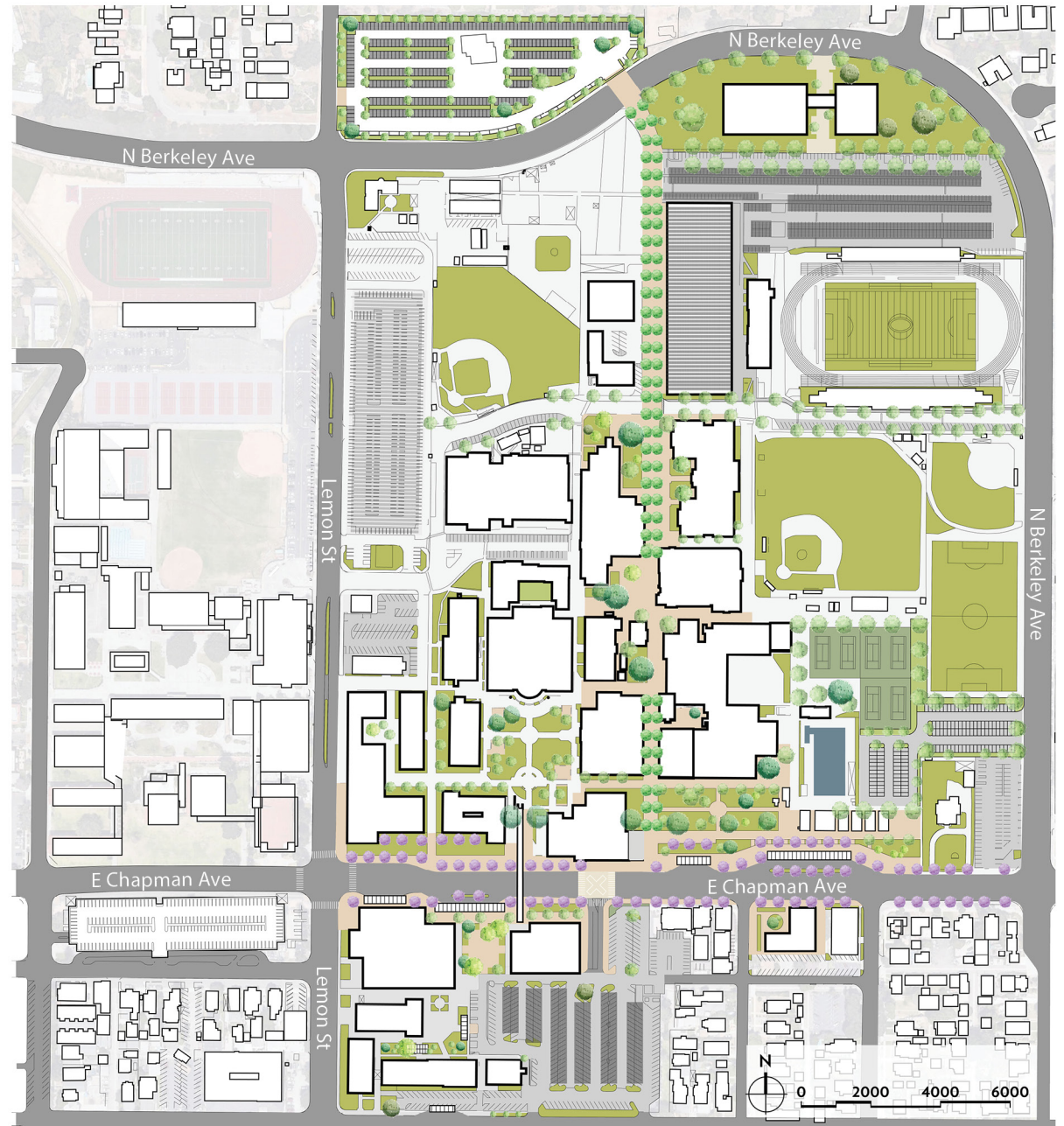
04

Implementation: Opportunity Sites

Implementation: Opportunity Sites

FACILITIES MASTER PLAN IMPLEMENTATION OVERVIEW

Building upon current planning initiatives and key themes identified within this new master plan, the implementation Opportunity Sites demonstrate our project recommendations to carry Fullerton College through the next ten years of planning, and beyond. The opportunities embody the established vision including aspirations that may not be obtainable within the ten-year master plan; those projects are identified as Long Range Projects. The Master Plan has been established as a flexible framework, allowing the College and District to prioritize and implement elements based on future emerging fiscal and logistical priorities.



FUTURE CAMPUS PLAN



FULLERTON COLLEGE 3D AERIAL VIEW

PROPERTY ACQUISITION SITES

A priority for the College and District is to assist in providing solutions for campus parking challenges. One strategy is to lease or purchase neighboring properties for additional surface parking. Property acquisition opportunities are not limited to those properties identified on this page.



RETAIL CENTER SOUTH OF CHAPMAN

Purchasing and redeveloping the retail center south of Chapman Avenue would strengthen the Campus Spine, and help to envision the buildings and programs that front Chapman Avenue.



PLUMMER AUDITORIUM PARKING

City-owned parking garage - Fullerton College currently has a shared agreement for use by college parking permit holders.



PARKING LOT ADJACENT TO WALGREENS

This land was recently leased by the District to alleviate some of the parking issues at Fullerton College. Those with a campus parking permit can park here and take a shuttle bus to the campus. Additional neighboring properties should be considered for purchase as they become available, for continued response to campus parking needs.



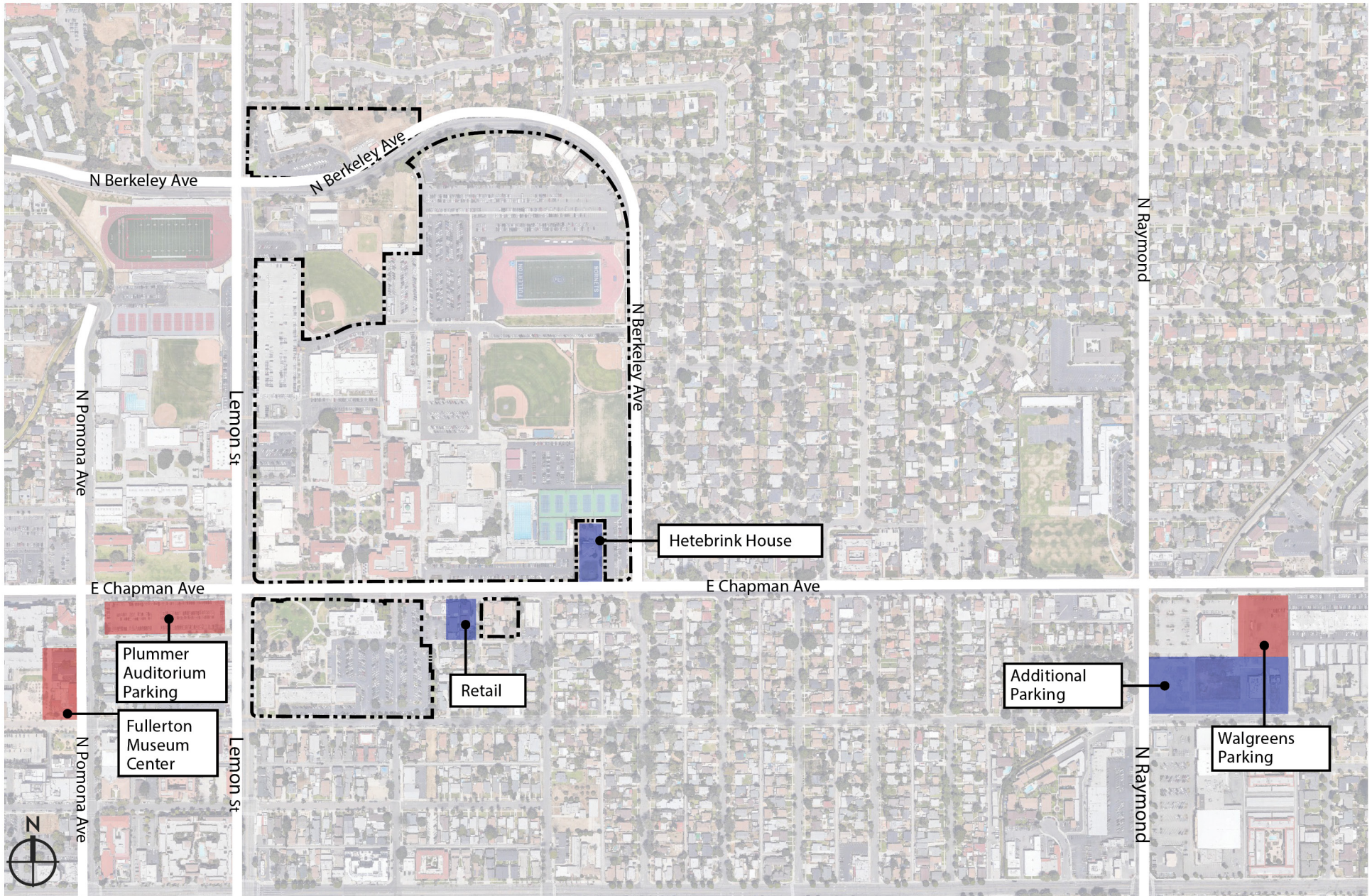
FULLERTON MUSEUM CENTER

Fullerton College currently owns this property and leases / loans it to the City to house the museum. There is an opportunity to either reallocate the space back to Fullerton for instructional or other needs, or to sell / give the City the property. Options should be considered so that the space utilization is maximized.



HETEBRINK HOUSE

This is a historically significant house and would need to be preserved. Possible programs to relocate here include the Fullerton College Foundation or Alumni Association.



MAP OF ADJACENT PROPERTIES: CURRENT OR POTENTIAL FOR FUTURE LEASE / OWNERSHIP

--- College Boundary

Property Acquisition Opportunity

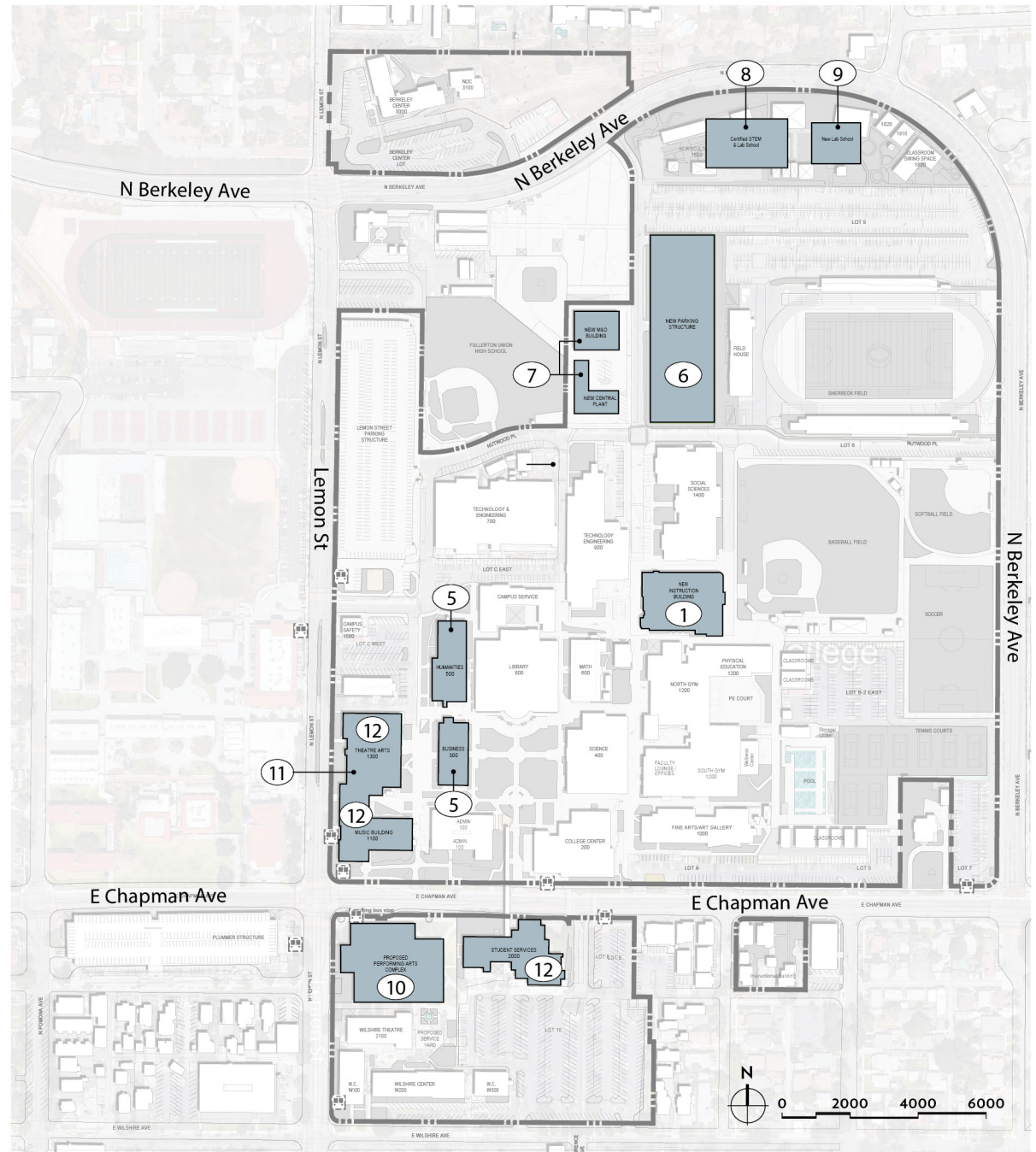
Owned / Leased Property

CURRENT PLANNING PROJECTS

The projects shown in blue on the map, along with those listed on the following page, include current major projects Fullerton College has been planning and implementing. Some projects are actively in design or construction, while others are in the queue. This new Master Plan confirms that these previously identified projects remain priorities for the College and District.

LEGEND

In-Construction & In-Planning Projects



IN-CONSTRUCTION PROJECTS

1. New Instructional Building

The building will accommodate more than 40 classrooms and the division office services including staff offices.

2. Central Plant Expansion

Addition to Central Plant building to upgrade campus infrastructure.

3. Network Refresh

Campus-wide and District-wide infrastructure upgrades, including broader and faster WiFi and addressing wired, wireless, voice, and video networks.

4. Infrastructure Improvements

Includes new sewer lines and other infrastructure preparation for 300 and 500 Building renovations.

IN-CONSTRUCTION PROJECTS

5. Renovation of 300 and 500 Buildings

Total renovation of Buildings 300 and 500, including historic consideration of Building 300. The renovated buildings will contain general classrooms, CIS laboratories, ACT laboratories, photography laboratories, Dean and faculty offices, shared laboratories, and a lecture hall.

6. New Parking Structure or Other Parking Solutions

Add 840 parking spaces by building a new parking structure, purchasing or leasing adjacent surface parking lots, or by another solution.

7. New Maintenance & Operations (M&O) Building, Central Plant Expansion, and Thermal Energy Storage (TES)

Project includes the replacement and expansion of the existing central plant to accommodate three 600-ton high-efficiency water chillers and cooling towers.

IN-PLANNING PROJECTS CONTINUED

8. New STEM Vocational Center

New building to house and replace temporary buildings for Horticulture, includes renaming and expanding the program to include other STEM programs.

9. New CDES Lab School Building

New building to house and replace temporary buildings for Lab School.

10. New Performing Arts Complex

New gateway building on the corner of Chapman Avenue and Lemon Street for a new performing arts center for music and drama programs. Includes classrooms, offices, study rooms, and support spaces.

11. New Welcome Center

New gateway building on the corner of Chapman Avenue and Lemon Street to house visitor information and Student Services, such as Social Justice Conference Room and Student Cultural Spaces.

12. Demolition of Buildings 1100, 1300, and 2000

In order to accommodate space for the Welcome Center, buildings 1100 and 1300 will need to be demolished. Once the Welcome Center is built to relocate the Student Services programs, Building 2000 will be demolished.

13. Sherbeck Field Enhancements

The addition of bleacher seating and stadium lighting.

14. Accessibility Enhancements

Implementing accessibility improvements throughout campus, such as ramps, lifts, handrails, or restroom accessories.

15. Mass Communications & Security Systems Upgrades

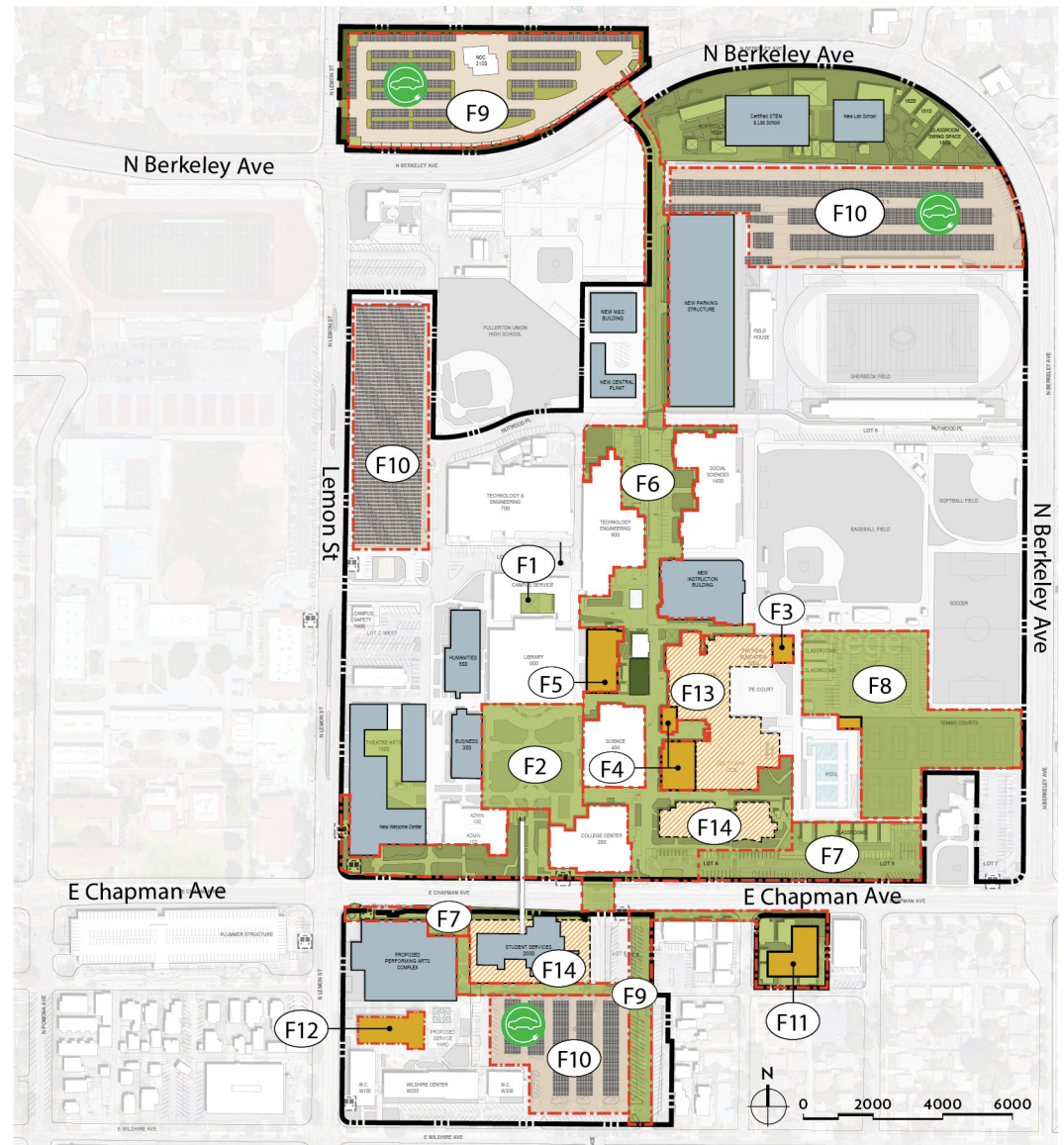
Campus-wide and District-wide upgrades to security and alarm systems.

OPPORTUNITY SITES

Each project within the master plan framework has been established based on educational and facility needs, construction staging and sequencing considerations, and potential for funding opportunities. The projects preserve the flexibility to accommodate future unforeseen implementation opportunities and challenges as they arise. The projects shown in orange represent new building and existing building renovation opportunities. The areas shown in green represent new public realm opportunities. While the Master Plan does not identify specific priorities or establish a timeline, the new opportunities have been organized by construction costs to assist the District in determining the implementation schedule:

- Small Capital Projects are those less than \$2 million
- Medium Capital Projects are those ranging between \$2 – 30 million
- Large Capital Projects are those greater than \$30 million

Long-Range Projects, a fourth category, identifies aspirational projects which are important to the Master Plan but may not be feasible to implement by 2030; they are not defined by cost as that is a variable of time.



LEGEND

Potential Building Sites	Public Realm Potential Sites	PV Panels	Potential Property Acquisitions	Electric Vehicle Charging Stations
In-Construction and In-Planning Projects	Parking	Long-Range Projects	Opportunity Sites	